



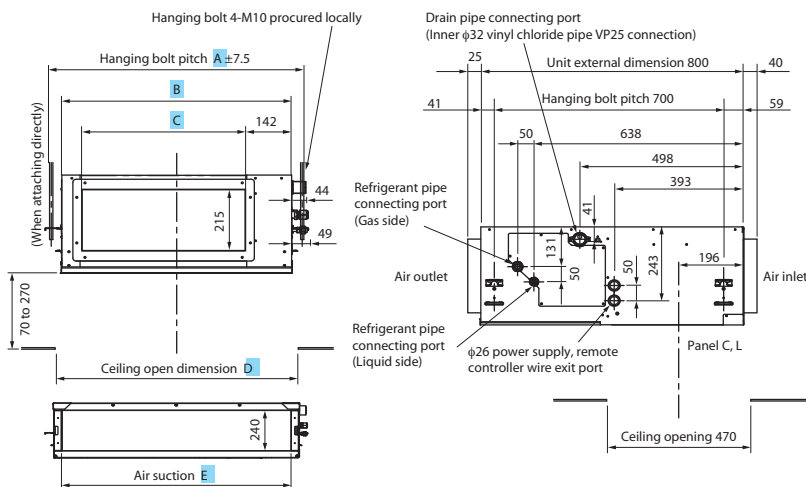
The Standard Ducted unit can easily be installed in ceiling voids or false ceilings and operates very quietly. Whatever the shape of the room, this flexible unit ensures uniform temperatures.

## VRF Indoor Unit - Standard Ducted

- Unit can be easily installed in ceiling voids or false ceilings
- Whisper-quiet operation
- Uniform temperature and air distribution for any room shape
- Enhanced indoor air quality for optimum occupant comfort
- Wide range of filters and fresh air intake for constant air renewal
- Space-saving design; only 320mm high
- High-lift drain pump (270mm)
- Designed for use with refrigerant R410A

Indoor Unit	MMU	AP0071BH	AP0091BH	AP0121BH	AP0151BH	AP0181BH	AP0241BH
Capacity code	hp	0.8	1	1.25	1.7	2	2.5
Cooling Capacity	kW	2.2	2.8	3.6	4.5	5.6	7.1
Heating Capacity	kW	2.5	3.2	4	5	6.3	8
Power Input	kW	0.033	0.033	0.039	0.039	0.05	0.06
Air flow (High/Medium/Low)	V/s	133/11/95	133/117/95	158/136/111	181/150/133	217/183/150	317/275/242
Sound Pressure Level (High/Medium/Low)	dB(A)	30/28/26	30/28/26	31/29/27	31/29/27	32/30/28	33/31/29
Dimensions, height x width x depth	mm	320x550x800	320x550x800	320x550x800	320x700x800	320x700x800	320x1000x800
Weight	kg	28	28	28	32	32	43
Max. Operating Current	A	0.29	0.29	0.34	0.34	0.43	0.52
Starting Current	A	0.50	0.50	0.59	0.59	0.75	0.9
Suggested Fuse Size	A	3	3	3	3	3	3
Power Supply	V-ph-Hz	220/240-1-50	220/240-1-50	220/240-1-50	220/240-1-50	220/240-1-50	220/240-1-50

Indoor Unit	MMU	AP0271BH	AP0301BH	AP0361BH	AP0481BH	AP0561BH
Capacity code	hp	3	3.2	4	5	6
Cooling Capacity	kW	8	9	11.2	14	16
Heating Capacity	kW	9	10	12.5	16	18
Power Input	kW	0.06	0.071	0.107	0.128	0.128
Air flow (High/Medium/Low)	V/s	317/275/242	350/300/242	540/392/333	550/475/414	550/475/414
Sound Pressure Level (High/Medium/Low)	dB(A)	33/31/29	34/32/29	36/34/32	35/36/32	38/36/32
Dimensions, height x width x depth	mm	320x1000x800	320x1000x800	320x1350x800	320x1350x800	320x1350x800
Weight	kg	43	43	55	55	55
Max. Operating Current	A	0.52	0.61	0.83	0.98	0.98
Starting Current	A	0.90	1.05	1.44	1.7	1.7
Suggested Fuse Size	A	3	3	3	3	3
Power Supply	V-ph-Hz	220/240-1-50	220/240-1-50	220/240-1-50	220/240-1-50	220/240-1-50



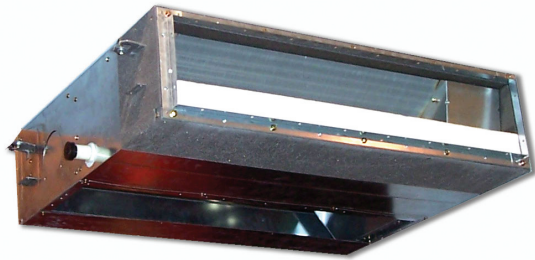
Model	MMD-	A	B	C	D	E
AP0071BH, AP0091BH, AP0121BH		616	550	350	600	470
AP0151BH, AP0181BH		766	700	500	750	620
AP0241BH, AP0271BH, AP0301BH		1066	1000	800	1050	920
AP0361BH, AP0481BH, AP0561BH		1416	1350	1150	1400	1270

All data is based on Toshiba Nominal Conditions as described in the back of our standard price list.

VRF Indoor Unit - Standard Ducted

# TOSHIBA

Leading Innovation >>>

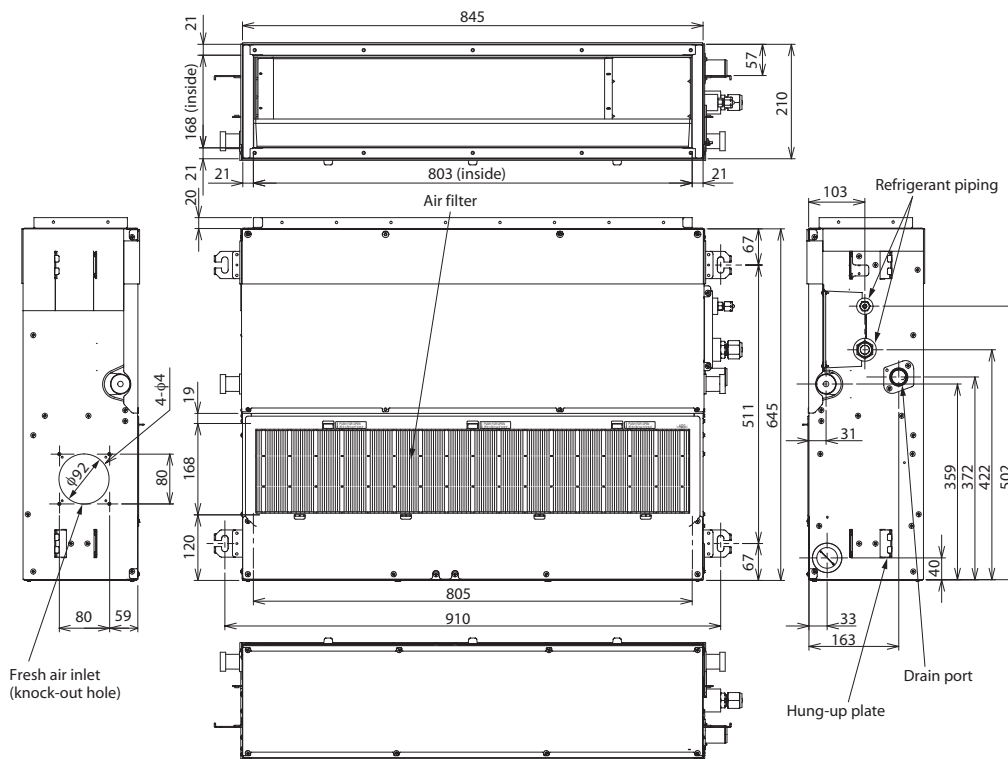


## VRF Indoor Unit - Slim Ducted

- Precise capacity control at all conditions
- Slim-line grille (25mm)
- Adjustable air distribution via remote controller
- Compact unit - only 210mm void space required
- Performance tuning for optimised comfort
- Easy installation and maintenance with long-life washable filter
- Quiet operation with automatic air flow control
- 850mm lift pump
- Designed for use with refrigerant R410A

The Slim Ducted Unit offers the ultimate technology with exceptional energy savings, high performance and easy installation. It is ideal for hotel rooms.

Indoor Unit	MMD	AP0071SPH	AP0091SPH	AP0121SPH	AP0152SPH	AP0182SPH
Capacity code	hp	0.8	1	1.25	1.7	2
Cooling Capacity	kW	2.2	2.8	3.6	4.5	5.6
Heating Capacity	kW	2.5	3.2	4	5	6.3
Power Input	kW	0.039	0.039	0.043	0.045	0.054
Air flow (High/Medium/Low)	l/s	150/131/111	150/131/111	167/144/125	192/167/144	217/189/161
Sound Pressure Level Bottom (High/Medium/Low)	dB(A)	36/33/30	36/33/30	38/35/32	39/36/33	40/38/36
Sound Pressure Level Rear (High/Medium/Low)	dB(A)	28/26/24	28/26/24	29/27/25	32/30/28	33/31/29
Dimensions, height x width x depth	mm	210x845x645	210x845x645	210x845x645	210x845x645	210x845x645
Weight	kg	22	22	22	23	23
Max. Operating Current	A	0.29	0.29	0.31	0.32	0.39
Starting Current	A	0.51	0.51	0.54	0.56	0.68
Suggested Fuse Size	A	3	3	3	3	3
Power Supply	V-ph-Hz8	220/240-1-50	220/240-1-50	220/240-1-50	220/240-1-50	220/240-1-50



VRF Indoor Unit - Slim Ducted