



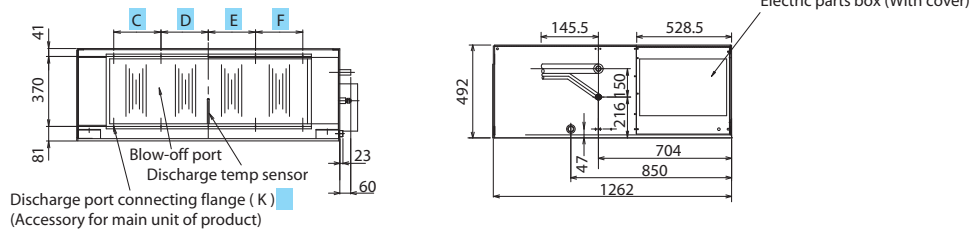
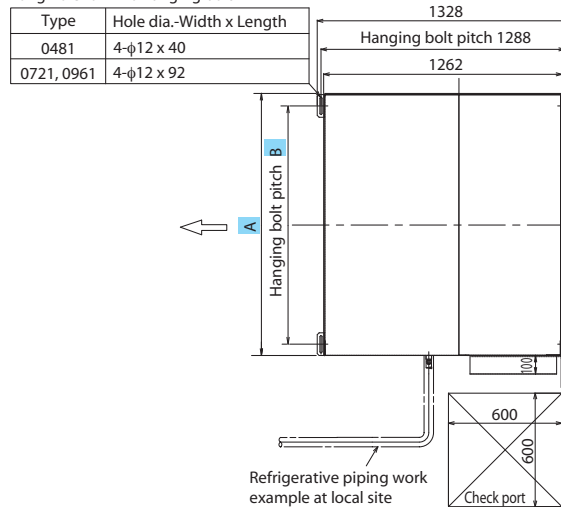
Fresh Air Intake SMMS VRF System

- Operates as part of SMMS (up to 30% of the systems capacity)
- Three models, air flow range from 300 to 583 l/s
- Helps prevent sick building syndrome
- Controls the temperature of the air supply
- TCC Link control
- Powerful centrifugal fan with three-speed single-phase motor
- Heats air as low as -5°C

The Fresh Air Intake unit offers the possibility to introduce in the building pre-conditioned external fresh air. This unit is the ideal solution for schools, hospitals, offices and all buildings that require a fresh air ventilation without any further exclusive system.

Model	Indoor Unit	MMD	AP0481HFE	AP0721HFE	AP0961HFE
System Data	Cooling Capacity	kW	14	22.4	28
	Heating Capacity	kW	8.9	13.9	17.4
	Power Input, Cooling/Heating	kW	0.28	0.48	0.52
	Dimensions, height x width x depth	mm	492x892x1262	492x892x1262	492x892x1262
	Weight	kg	93	144	144
	Sound Pressure Level (cooling/heating)	dB(A)	45/43/41	46/45/44	46/45/44
	Maximum Operating Current	A	1.43	2.52	2.73
	Pipe connections, gas - liquid	A	5/8 - 3/8	7/8 - 1/2	7/8 - 1/2

Long hole for M10 hanging bolt



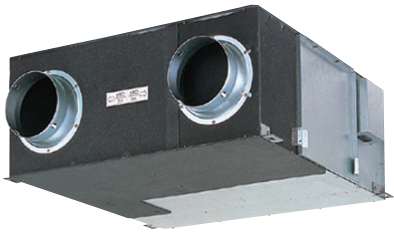
Model	MMD-	A	B	C	D	E	F	K
AP0961HFE		1392	1260	250	250	250	250	10-M6
AP0721HFE		1392	1260	250	250	250	250	10-M6
AP0481HFE		892	810	215	107.5	107.5	215	8-M6

All data is based on Toshiba Nominal Conditions as described in the back of our standard price list.

Super Modular Multi System Fresh Air Intake Indoor Unit

TOSHIBA

Leading Innovation >>>

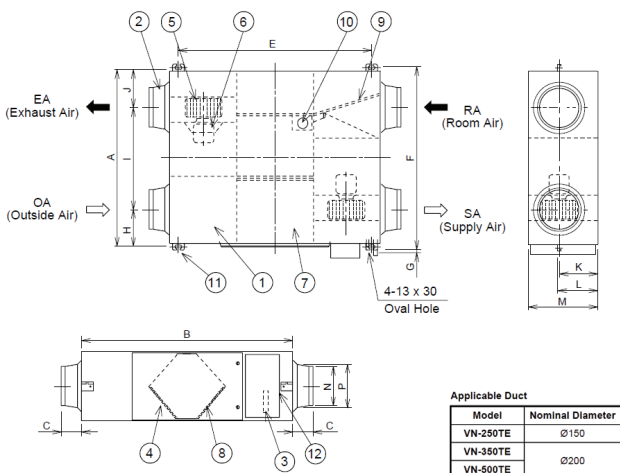


VRF Air-to-Air Heat Exchangers

- Compatible with all VRF outdoor units
- Five models, air flow range 70 to 280 l/s
- Can be integrated into air conditioning systems, reduces size of overall system
- Fresh air ventilation
- Changes temperature and humidity of entering fresh air
- Helps prevent sick building syndrome
- Reclaims 20-50% of the energy lost by ventilation
- Recovery of up to 75% heat from the outgoing air

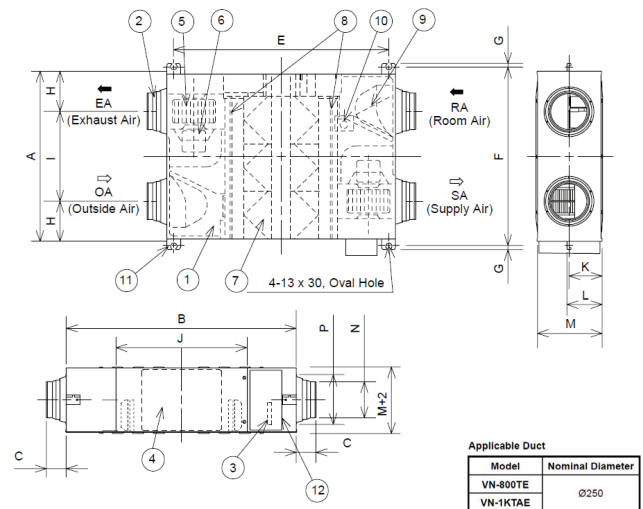
The VRF Air-to-Air Heat Exchangers exhaust air to pre-condition the incoming air, thus reducing the cooling or heating load and the overall size for the required air conditioning system.

	VN	VN-250TE	VN-350TE	VN-500TE	VN-800TE	VN-1KTAE
Air flow rate, high	l/s (m³/h)	69 (250)	97 (350)	139 (500)	222 (800)	278 (1000)
Air flow rate, low	l/s (m³/h)	47 (170)	78 (280)	103 (370)	181 (650)	225 (810)
Temperature exchange efficiency (EH/H/L)	%	75/75/77	75/75/77	75/75/77	75/75/76	75/75/76
Input power (EH/H/L)	W					
Heat reclaim mode		119/114/90	154/137/128	214/188/166	347/329/327	445/399/367
Bypass mode		119/114/90	151/132/125	310/182/164	337/325/316	438/392/362
Enthalpy exchange efficiency (EH/H/L)						
Heating	%	70/70/73	69/69/71	67/67/71	71/71/74	71/71/73
Cooling	%	63/63/66	66/66/69	62/62/67	65/65/68	65/65/68
Max. external static pressure (EH/H/L)	Pa	90/80/37	95/65/42	105/70/38	140/110/70	90/55/35
Sound Pressure Level (EH/H/L)	dB(A)					
Heat reclaim mode		28/27/22	32/30/26	34/32/26	39/37.5/34	38/5/37/33
Bypass mode		28/2735/22.5	32/31/27	35/33/27.5	39.5/38/35	39.5/38/35
Dimensions heightxwidthxdepth	mm	270x599x882	270x804x882	270x904x962	388x884x1322	388x1134x1322
Weight	kg	29	37	43	71	83
Duct diameter	mm	150	150	200	250	250
Filtration efficiency grade (EU3)	%	82	82	82	82	82
Power supply	V-ph-Hz	220/240-1-50	220/240-1-50	220/240-1-50	220/240-1-50	220/240-1-50
Operating range	°C	-10 to 40	-10 to 40	-10 to 40	-10 to 40	-10 to 40
Relative humidity	%	85% or less				



Model	A	B	C	E	F	G	H	I	J	K	L	M	N	P
VN-250TE	599	882	95	810	655	19	142	315	142	135	159	270	Ø144	Ø164
VN-350TE	804	882	95	810	860	19	162	480	162	135	159	270	Ø144	Ø164
VN-500TE	904	962	107	890	960	19	202	500	202	135	159	70	Ø194	Ø210

VN-250TE, VN-350TE, VN-500TE



Model	A	B	C	E	F	G	H	I	J	K	L	M	N	P
VN-800TE	884	1322	85	1250	940	19	228	428	612	194	218	388	Ø245	Ø258
VN-1KTAE	1134	1322	85	1250	1190	19	228	678	612	194	218	388	Ø242	Ø258

VN-800TE, VN-1KTAE



VRF Air-to-Air Heat Exchange