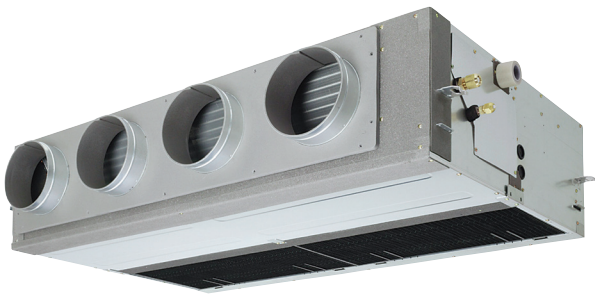


## Ducted Unit Heat Pump System



- Increased energy efficiency/cost savings
- New fan motor and enhanced compressor design
- Extended pipe runs/greater installation flexibility
- More steps for precise inverter control
- Operating range down to -15°C (cooling)
- High-performance heating, even at -20°C
- Increased heat exchanger efficiency
- All rated A for energy efficiency
- Discharge spigots as standard
- Infra-red and wired controls available
- High static pressure up to 98 Pa

The Super Digital Inverter series of ducted units can be discreetly positioned in the walls or ceiling. They are ideal for hotels, banks and similar applications where very low noise levels and maximum distribution are needed.

The units are suitable for use with either new R410A refrigerant pipe work, or indeed can be used as 'replacement technology' enabling the re-use of existing R22 or R407c Pipe work.



Size 564

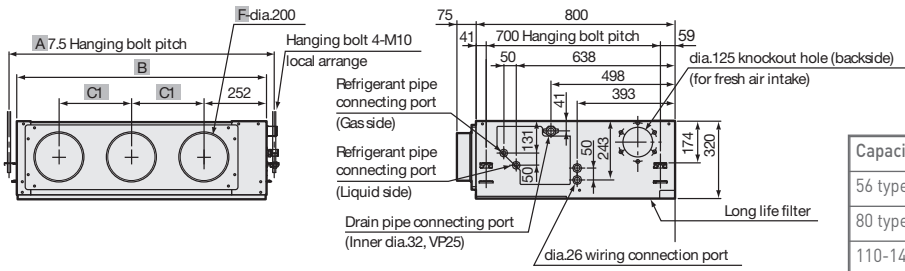
Size 804

Size 1104 and 1404

Model	Outdoor Unit		RAV	SP564AT-E	SP804AT-E	SP1104AT-E	SP1404AT-E
	Indoor Unit		RAV	SM562BT-E	SM802BT-E	SM1102BT-E	SM1402BT-E
System Data	Cooling Capacity (Range)	kW		5.0 (1.2-5.6)	7.1 (1.9-8.0)	10.0 (2.6-12.0)	12.5 (2.6-14.0)
	Heating Capacity (Range)	kW		5.6 (0.9-7.4)	8.0 (1.3-10.6)	11.2 (2.4-13.0)	14.0 (2.4-16.5)
	Power Input, Cooling/Heating	kW		1.39/1.55	2.21/2.21	2.94/2.77	3.83/3.41
	COP	W/W		3.61	3.62	4.04	4.81
	EER	W/W		3.21	3.21	3.4	3.4
	SEER	W/W		5.07	5.38	4.93	4.88
	Annual Power Consumption, Cooling	kWh		780	1105	1470	1915
	Energy Label, Cooling / Heating	A/A		A/A	A/A	A/A	A/A
	UK Conditions - Cooling Capacity	kW		5.44	7.76	11.65	13.59
	UK Conditions - Sensible Cooling Capacity	kW		4.2	5.85	8.19	9.2
UK Conditions - Heating Capacity	kW		5.21	7.08	9.68	12.29	
Indoor	Air flow (High/Medium/Low)	l/s		161/198/217	222/270/317	315/383/450	385/467/550
	Sound Pressure Level (High/Medium/Low)	dB(A)		33/37/40	34/37/40	36/39/42	38/41/44
Outdoor	Airflow	l/s (m3/h)		667 (2400)	833 (3000)	1683 (6060)	1716 (6180)
	Sound Pressure Level (cooling/heating)	dB(A)		47/48	48/49	49/50	51/52
	Pipe Connections, Gas - Liquid	in		1/2 - 1/4	5/8 - 3/8	5/8 - 3/8	5/8 - 3/8
	Pipe Length, Maximum/Minimum	m		50/5	50/5	75/5	75/5
	Maximum Operating Current	A		7.26	9.74	12.98	15.82
	Base charge refrigerant level	Kg		1.1	2	3.1	3.1
	Suggested Fuse Size	A		10	10	20	20

All data is based on Toshiba Nominal Conditions as described in the back of our standard price list.

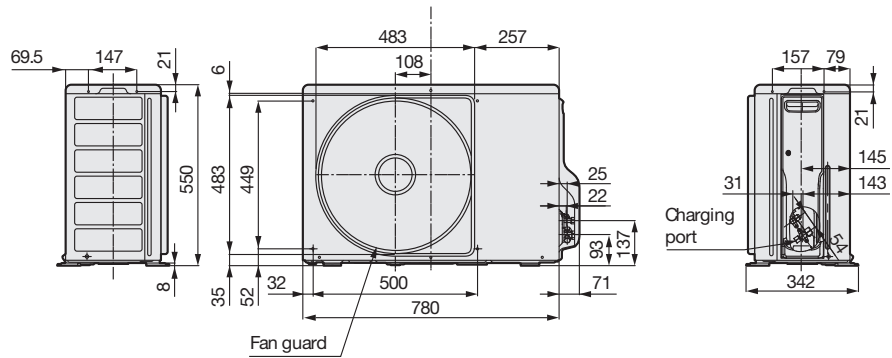
## INDOOR UNITS



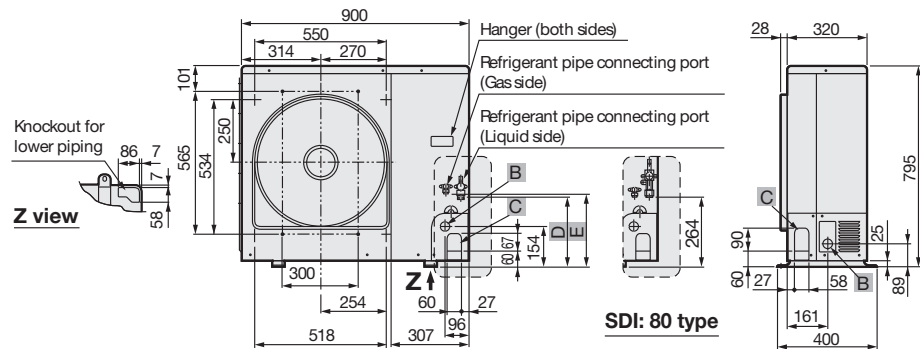
Capacity class	A	B	C	Spigots
56 type	766	700	280	2
80 type	1066	1000	290	3
110-140 type	1416	1350	310	4

## RAV-SM562BT-E, RAV-SM802BT-E, RAV-SM1102BT-E and RAV-SM1402BT-E

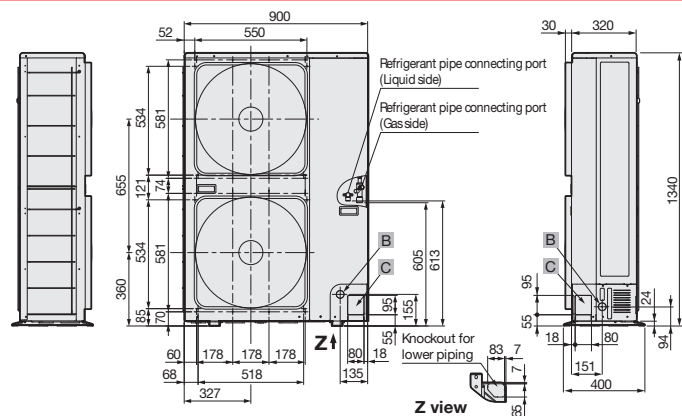
## OUTDOOR UNITS



## RAV-SP804AT-E



## RAV-SP564AT-E



## RAV-SP1104AT-E and RAV-SP1404AT-E

