

## 4 Way Cassette Heat Pump System



- High Efficiency Twin Rotary Inverter Compressor
- Utilises R410a none ozone depleting refrigerant
- Replacement Technology (R22 & R407c)
- Light weight & Easy to Install
- Built-in Drain Pump up to 750mm
- Self Cleaning Function & Anti mold drain pan
- Removable Corner Pockets for easy access
- Infra-red and wired controls available
- Operational to -15°C in Cooling & Heating
- Detachable Louvre and Grille for Easy Cleaning
- Single power supply to outdoor unit only
- Variable louvre options

The Digital Inverter Series of cassettes are unobtrusive and flexible which can easily blend in with any room interior, due to Toshiba's very own Hybrid Inverter Drive. They offer a high performance utilizing minimum energy to help lower your energy costs.

The units are suitable for use with either new R410A refrigerant pipe work, or indeed can be used as 'replacement technology' enabling the re-use of existing R22 or R407c Pipe work. One system 3 possible solutions.\*

The ceiling panel offers uniform air distribution providing total comfort and maximum control.



Size 563 & 803

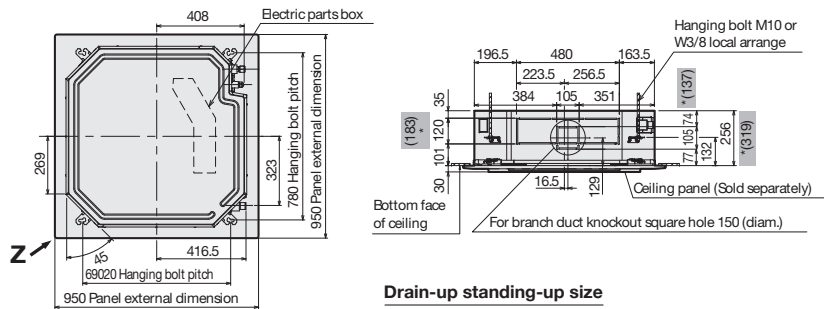
Size 1103 & 1403

Size 1603

Model	Outdoor Unit	RAV	SM563AT-E	SM803AT-E	SM1103AT-E	SM1403AT-E	SM1603AT-E
	Indoor Unit	RAV	SM564UT-E	SM804UT-E	SM1104UT-E	SM1404UT-E	SM1604UT-E
	Panel	RBC	U31PGW-E	U31PGW-E	U31PGW-E	U31PGW-E	U31PGW-E
System Data	Cooling Capacity (Range)	kW	5.3 [1.5-5.6]	6.7 [1.5-7.4]	10 [3-11.2]	12.1 [3-13.2]	14 [3-16]
	Heating Capacity (Range)	kW	5.6 [1.5-6.3]	8 [1.5-9]	11.2 [3-13]	14 [3-16]	16 [3-18]
	Power Input, Cooling/Heating	kW	1.65/1.44	2.09/2.21	3.11/3.1	3.77/3.88	4.49/4.43
	COP	W/W	3.89	3.62	3.61	3.61	3.61
	EER	W/W	3.21	3.21	3.22	3.21	3.12
	SEER	W/W	3.99	4.21	4.29	4.45	
	Annual Power Consumption, Cooling	kWh	825	1045	1555	1885	2245
	Energy Label, Cooling / Heating	A/A			A/A	A/A	B/A
UK Conditions - Cooling Capacity	kW		5.44	7.46	10.87	12.61	15.53
	kW		4.26	5.25	6.67	8.15	11.1
	kW		4.69	6.72	9.68	11.92	13.64
Indoor	Air flow (High/Medium/Low)	l/s	292/242/217	342/267/225	558/400/325	583/400/325	592/417/350
	Sound Pressure Level (High/Medium/Low)	dB(A)	32/29/28	35/31/28	43/38/33	44/38/34	45/40/36
Outdoor	Airflow	l/s (m3/h)	667 [2400]	750 [2700]	1250 [4500]	1250 [4500]	1717 [6180]
	Sound Pressure Level (cooling/heating)	dB(A)	46/48	48/50	53/54	53/54	51/53
	Pipe Connections, Gas - Liquid	in	1/2 - 1/4	5/8 - 3/8	5/8 - 3/8	5/8 - 3/8	5/8 - 3/8
	Pipe Length, Maximum/Minimum	m	30/5	30/5	50/5	50/5	50/5
	Maximum Operating Current	A	7.9	10.1	14.4	17.7	23.9
	Base charge refrigerant level	Kg	1	1.7	2.8	2.8	3.1
	Suggested Fuse Size	A	10	16	20	20	25

All data is based on Toshiba Nominal Conditions as described in the back of our standard price list.  
\* conditions apply

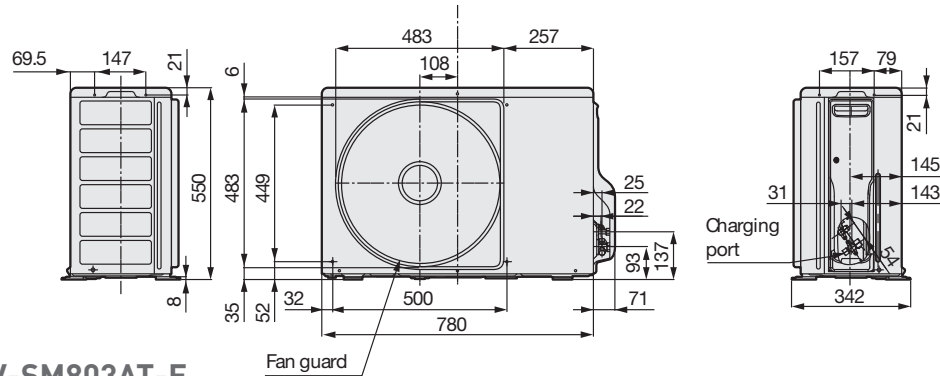
## INDOOR UNITS



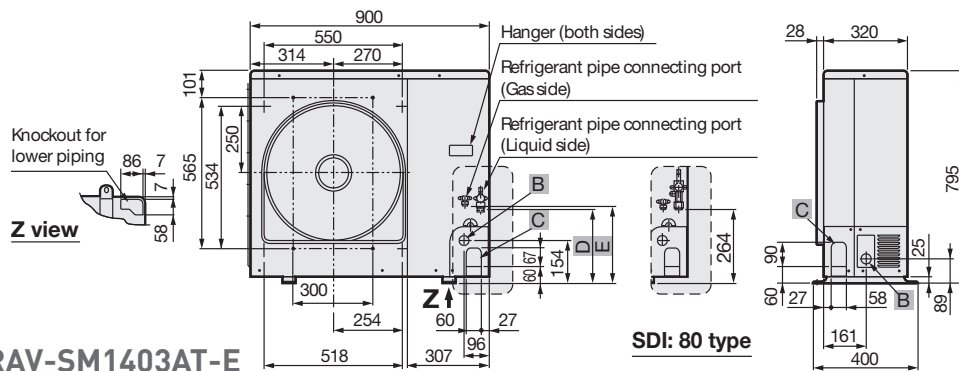
Drain-up standing-up size

RAV-SM562MUT-E and RAV-SM803AT-E  
RAV-SM1104UT-E, RAV-SM1404UT-E and RAV-SM1604UT-E

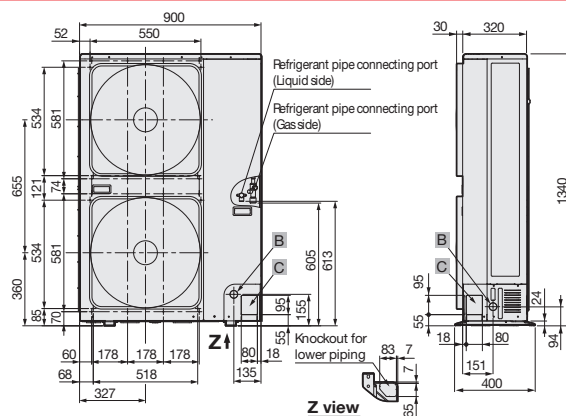
## OUTDOOR UNITS



RAV-SM562AT-E and RAV-SM803AT-E



RAV-SM1103AT-E and RAV-SM1403AT-E



RAV-SM1603AT-E

